

Park View Village

Newsletter – Vol. 5, No. 5

September-October, 2015



Between 35 and 40 PVV members and guests attended our annual meeting on Sept. 10, enjoying a potluck dinner and discussion with Harrisonburg Mayor Chris Jones. Mayor Jones (at lectern to right) spoke on the operations of the city and, in turn, learned from us about the work of Park View Village.

Photos by Ray Gingerich



BOARD PRESIDENT UPDATE

At the Park View Village Board's October meeting, we were pleased to have Mickey Watkins from Rockbridge County with us. She volunteers with Valley Program for Aging Services and is researching Village-To-Village organizations. She may be back for the October 20 program with Dr. Sam Showalter. Dr. Showalter has worked with patients dealing with addictions.

The board had a lively discussion on the topic of using the term "aging in place" vs. "aging in community" or "aging in neighborhoods." It was noted the Park View Village mission is to provide neighborhood members with community-building activities and home-based services, thereby promoting independence, convenience, safety, and well-being for those who wish to live in their own home in a multi-generational community. Park View Village promotes interdependence as the preferred model for living in a healthy community. The board affirmed "aging in community" as the concept that best summarizes our work.

For more information visit our website at: www.parkviewvillageva.org.

Hope to see you soon.

Keith Gnagey, President

CALENDAR.....

Tuesday, Oct. 20, 7 pm, Park View Mennonite Church Fireside Room - Dr. Sam Showalter will present a lecture on "Addictions and the Elderly." Over the years Sam has done extensive research on substance abuse, and those who have heard him have really been impressed with his in-depth knowledge and overall presentation.

Tuesday, Nov. 10, 7 pm - Speaker Spenser Li, social work director for the Luoyuan Christian Church near his home in China, is currently studying at EMU and interning at VMRC. His goal is to observe how the aging are cared for in the U.S. compared with China, where there is concern about the one-child limit causing a shortage of caregivers. He will share his observations.

Early December: Christmas program. Look for details soon!



VENDOR SPOTLIGHT



Meals 4 Home

A new meal service has opened at 105 North Liberty Street, Harrisonburg.

Proprietor, entrepreneur, and food scientist Jamie Eanes has a vision for making traditional, delicious, home-style food available for those who wish to enjoy their meals in the comforts of their homes.

Your Service Provider Coordinator (John Spicher) toured the food processing area and found it to be immaculately clean and equipped with modern equipment, such as rapid cooling cabinets, freeze drying, and vacuum packaging

units, all focused on taste and quality preservation. Most of the packages are microwave resistant and can be heated in situ. Mr. Eanes is a food scientist with 20 plus years of experience in food preservation and quality control.

Virginia, my wife, and I sampled the ham, mashed potatoes and a garden salad meal, all of which were excellent. The salad in particular was crisp and fresh. The volume was very adequate for two. The cost per meal is \$13.98. Occasional discount coupons will be made available to PVV members. Credit cards are accepted.

Orders are to be submitted on Thursday for the following week and can be picked up either on Tuesday or Thursday at 105 North Liberty Street (between W. Wolfe and W. Elizabeth Streets). Phone number (540)564-6181; email, customerservice@meals4home.com.

For more details, look up Meals 4 Home on Facebook or www.meals4home.com.

PVV Members: would you please notify **John Spicher, Vendor Services Coordinator**, of **vendors you have hired** that performed exceptional services at reasonable prices? John may be contacted at vjspicher@gmail.com or 442-8252.



SUMMER FIELD TRIP: On Aug. 18, 12 PVV members enjoyed a trip to the Museum of the Shenandoah Valley in Winchester as well as a tour of the adjoining Glen Burnie historic house and gardens . . . with and without umbrellas. The travelers, listed in the top right photo, from left, are Ray Gingerich, Ed Bontrager (program committee chair and trip organizer), Wilma Gingerich, Evelyn Driver, Ann Yoder, Clara Yoder, Anne Miller, Ed Yoder, Paul Yoder, Virginia and John Spicher and Greg Versen.

Photos by Greg Versen

HOW OLD ARE WE?

How old are the members of Park View Village? A quick tally of birth years as listed in our membership data base revealed the following interesting facts. (Some birthdates were not listed, so these totals do not add up to our current membership of 76.) Here is the tally:

- Age 85 and up, we have 9 members.
- Age 75-84, about 30 members.
- Age 65-74, about 20 members.
- Age 64 and under, about 6 members.
- We do not have members in the category of 100 years and above.

Within Gerontology circles, the persons age 65 to 74 are considered the “young old,” and of course those under 65 would likely not include any form of “old” in their self-assigned label. My challenge to the “youngsters” (all of us 74 and under) is to be sure that we include our “elders” in our plans and activities. In inclement weather and/or night time events, consider even taking the initiative to invite other members to accompany us to our PVV events and activities. We wish to be successful in helping all of us age while remaining in community with one another.

Evelyn Driver

HELPING HANDS

Volunteers, helping each other age in their community, are what Park View Village is all about. Need some help with light home maintenance, or Fall yard work? For a full list of volunteers, see the March-April PVV newsletter. To find members offering to provide transportation, see the July-August issue. You'll find links on the website to both.

To offer, or to request, a volunteer's help, contact **PVV Volunteer Coordinator Cliff Lind, 433-8225** or hope35lind@verizon.net.

Paul Yoder, chair of PVV's new **Member Recruitment Committee**, reports, “Several board members have been exchanging volunteer services, i.e.: lawn care, property management, etc. for each other. This is the kind of practice we encourage and trust will continue to make Park View Village work as we age in community.”

FILM SERIES 2015-16 *off to Singin' Start*

The 1952 classic "Singin' in the Rain" kicked off the 2015-16 film series at the Heatwole home theater on September 18. The hit musical, starring Gene Kelly and Debbie Reynolds, took the attendees back to 1920s Hollywood when the film industry was going from silent movies to "talkies." Next in the film series:

- "Never Cry Wolf," October 23
- "A League of their Own," November 13
- "Empire of the Sun," December 11.

Admission is free to members, and an old-fashioned popcorn machine provides the refreshments. This year's committee: Robin McNallie, Chris Edwards, John and Virginia Spicher, Steve and Karen Moshier Shenk. Watch for email announcements and please register to attend on the PVV website.

Steve Shenk

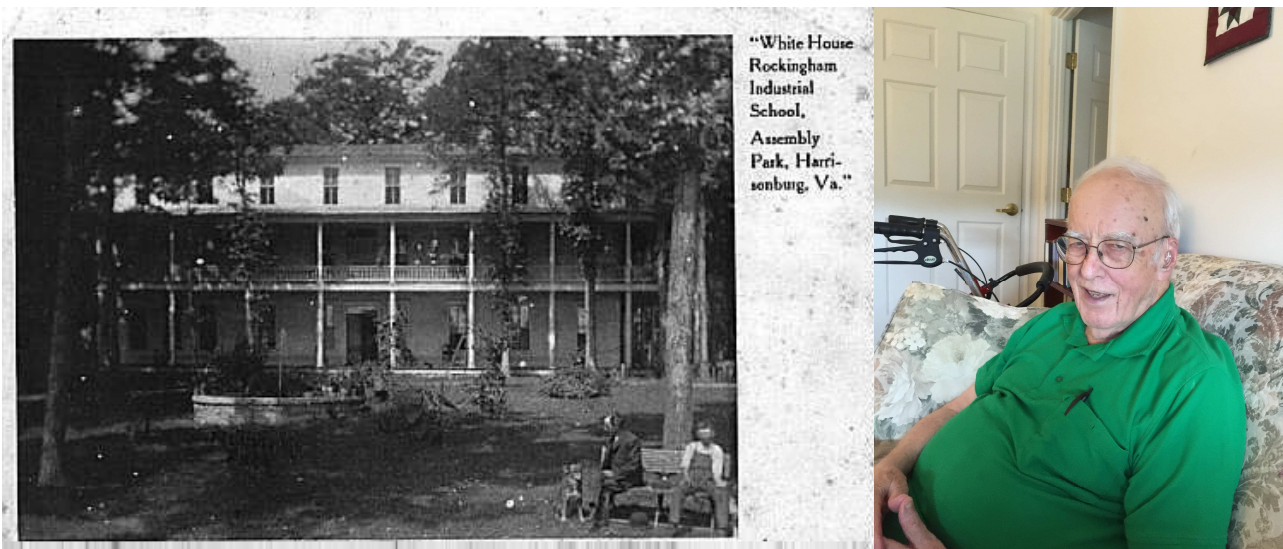


PVV's 3rd annual June picnic drew about 40 celebrants (above and next page), with Ed Bontrager and ensemble leading a musical encore.

More picnic pix . . . June 5 at Morrison Park – Photos by Greg Versen



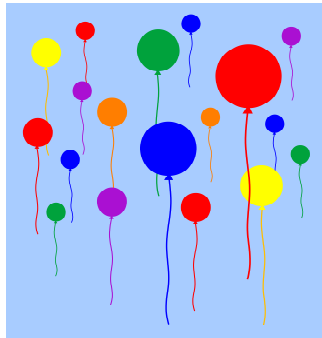
THE PARK IN “PARK VIEW”: Assembly Park



Left: the “White House” at Assembly Park, courtesy of USGenWeb (a volunteer-run, free genealogical database): <http://www.usgwarchives.net/va/photo/harrisonburg/whitehou.jpg>. Right: Harold D. Lehman, researcher and author of an article on the history of Assembly Park.

A century ago, crowds of up to 10,000 regularly descended on our neighborhood by train from as far as Baltimore and Lexington for Chautauqua meetings, farmers’ institutes, horse and bicycle races, band concerts, fireworks, sermons by famous evangelists, speeches by former Confederate officers, Brethren and Mennonite conferences, and more. The site was Assembly Park, “tucked away just west of Virginia Avenue” between now-EMU and VMRC and launched by Rev. A.P. Funkhouser in 1891, writes Harold D. Lehman in his well-researched article, “When Park Woods Was Assembly Park.” A nearby depot, east of Virginia Ave., accommodated visitors. The 23-acre Assembly Park was sold in 1917 to become the site of Eastern Mennonite School (later EMC, now EMU), which opened in Assembly Park’s cornerstone “White House” building, pictured above. The “White House” (a.k.a. “Old Park Building”) later served as an industrial school and eventually, the school Mr. Lehman – a retired EMC professor, now living at VMRC -- attended for half a year during elementary school. The boys’ assignments included gathering firewood. The well-worn building was demolished soon afterward. If you would like a copy (at no cost) of Mr. Lehman’s detailed and lively article, contact me (434-0457; chrisedwardshburg@gmail.com) or Paul Yoder (payoder@comcast.net; 540-810-0923).

Happy birthday, PVV members!



Upcoming birthdays

October RaMona Stahl, Evelyn J. Driver, Wilma Gingerich, Judy Harris, Loretta Helmuth, Mildred Hostetter, Hannah Mack Lapp, Pauline Myers, LeVon Smoker, Steve Shenk

November Esther Augsburg, Pearl Lantz, Anna S. Leakey, Yvonne Stutzman, J Lowell Wenger

And a belated listing from August (with our apologies) -- Mary Ann Heatwole



Deadline is **Nov. 16** for submissions to the **November-December, 2015 PVV newsletter**. Send all items to **Chris Edwards, editor, 434-0457; chrisedwardshburg@gmail.com**. (If the deadline seems early, it's because this issue is late and we hope to get back on schedule.) Thanks to all who contribute!

— Chris Edwards

The Park View Village Board

Ed Bontrager – Program Committee Chair
Evelyn Driver – Vice President
Chris Edwards – Newsletter Editor
Keith Gnagey – President
Nancy Gunden – Treasurer
Peggy Landis – Program Committee
Cliff Lind – Volunteer Coordinator
Robin McNallie – Program Committee
Anne Miller -- Membership
John Spicher – Vendor Services Chair
Arlene Wiens – Member Services Chair
Clara Yoder – Secretary
Paul Yoder – Member Recruitment

To contact Park View Village:

540-705-0432

website, <http://parkviewvillageva.org/>

Please note: The Park View Village website has been expanding to help members keep in touch. Have you gotten on <http://parkviewvillageva.org/> ? Are you able to use it to renew membership, register for an event, find a fellow-member's phone number and read this newsletter? A 5-page guide for using the website, titled "**Park View Village – Web Page – Quick Reference Guide,**" was distributed at September's annual meeting. If you don't have a copy and would like one, or have questions about using the site, please contact Evelyn Driver, 432-1505 or evelynjd@goshen.edu.



"Tell me and I forget. Teach me and I remember. Involve me and I learn."

Benjamin Franklin